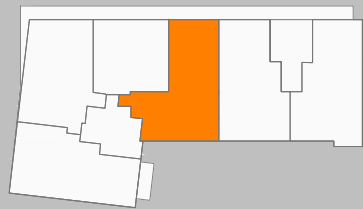


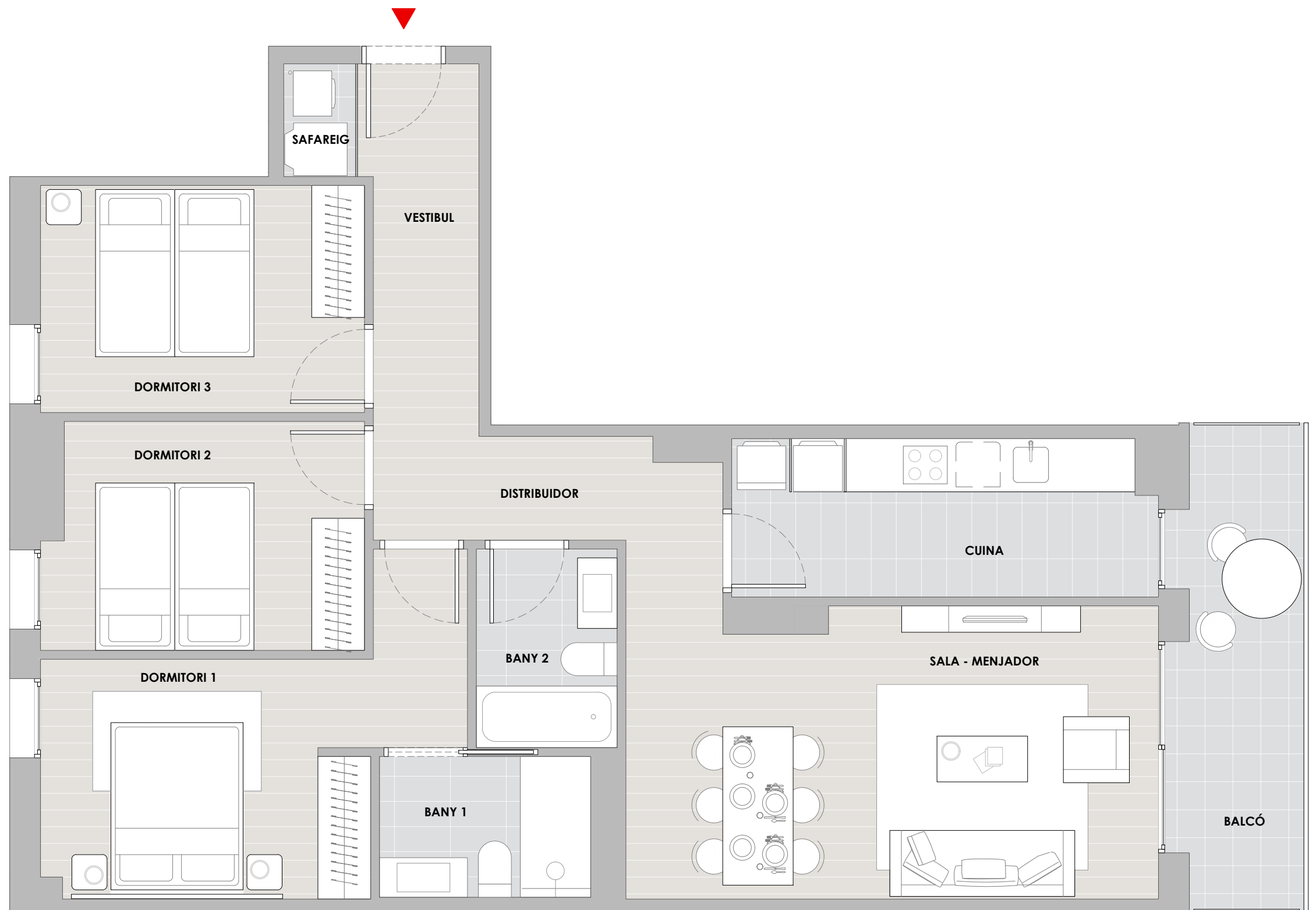
Escala A
Planta 8
Porta 2^a



Vestibul	1.77m ²
Cuina	8.56m ²
Sala - menjador	19.81m ²
Dormitori 1	12.54m ²
Dormitori 2	9.20m ²
Dormitori 3	9.50m ²
Bany 1	3.84m ²
Bany 2	3.61m ²
Distribuidor	8.76m ²
Safareig	1.07m ²
TOTAL Sup. útil	78.65m²
TOTAL Sup. construïda	92.89 m²
TOTAL Terrassa/Balcó	8.25m²



e.1:50



0 1 2 3